

Transducers

C5-2Q



2 - 5 MHz
Curved Array

MC8-4Q



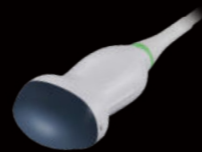
4 - 8 MHz
Micro - Convex Array

MC9-3TQ



3 - 9 MHz
Micro - convex Array

C6-2MQ



2 - 6 MHz
3D/4D Mechanical
Curved Array

L12-5Q



5 - 12 MHz
Linear Array

L17-7HQ



7 - 17 MHz
High Frequency
Linear Array

P5-1Q



1 - 5 MHz
Phased Array

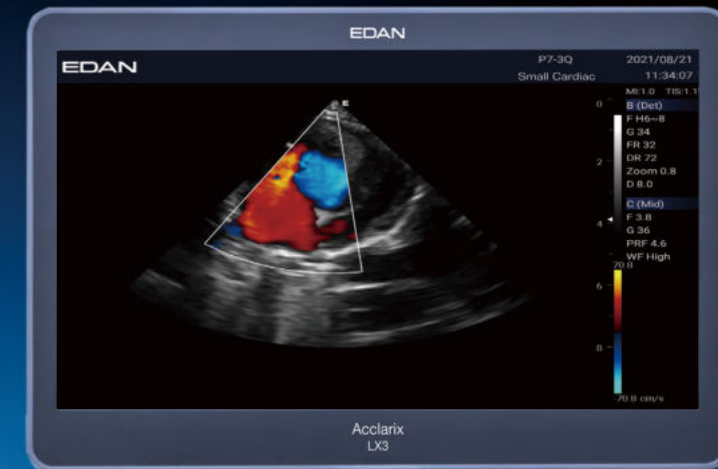
P7-3Q

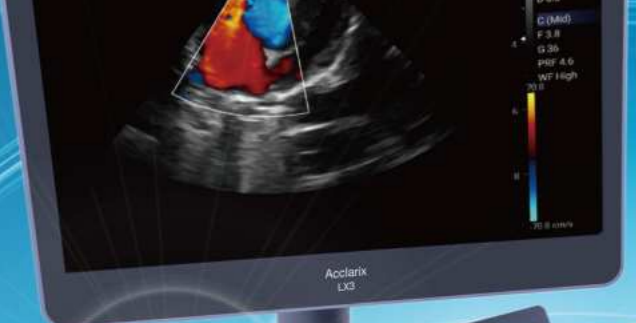


3 - 7 MHz
Phased Array

Flexible and Available at Fingertips

Acclarix™ LX3 VET
Diagnostic Ultrasound System





New Generation of Capability and Flexibility

Integrated with compact appearance, cutting-edge technology and intelligent workflow, Acclarix LX3 VET is to provide more valuable innovation. Its excellent image performance plays an important role in the prevention and early detection in primary medical care, enriching the diagnostic application and enhancing the clinical value.

The Virtue of Value

The Acclarix LX3 VET delivers unmatched value and performance across a broad range of applications:

- Canine
- Feline
- Bovine
- Ovine
- Equine
- Reproduction
- Cardiac
- Abdomen
- Superficial

Stunning Clarity

Compacted with innovative Edan TAI technology and multiple imaging processing technologies, Acclarix LX3 VET could perfectly display ultrasound image in different modes, assisting sonographer to make more precise diagnosis.

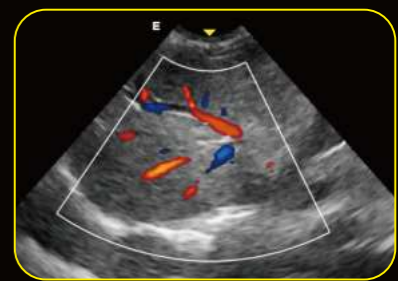
- High fidelity, high-channel count architecture results in superb detail resolution, particularly at depth
- Tissue Adaptive Imaging (TAI) continuously and automatically optimizes imaging allowing more focus on the patient
 - In B-mode, TAI fine tunes multiple parameters to provide the best possible image quality
 - In Doppler, TAI automatically adjusts for flow state, providing improved continuity, border detection and filling of color



Canine Heart (M mode)



Canine Heart (B mode)



Liver (C mode)



Gall bladder (B mode)



kidney (B mode)



Kidney (C mode)

Distinctive Design



Considerate gel warmer design for better experience



Customizable touch screen user panel to simplify diagnosis



5 active transducer ports to maximize clinical application



Keyboard with dedicated swivel for easy folding

Transducers

C5-2Q



2 - 5 MHz
Curved Array

C5-1Q



1 - 5 MHz
Single Crystal
Curved Array

MC8-4Q



4 - 8 MHz
Micro - Convex Array

MC9-3TQ



3 - 9 MHz
Micro - convex Array

L12-5HQ



5 - 12 MHz
Linear Array

L12-5Q



5 - 12 MHz
Linear Array

L17-7HQ



7 - 17 MHz
High Frequency
Linear Array

L17-7SQ



7 - 17 MHz
High Frequency Compact
Linear Array

E10-3BQ



3 - 10 MHz
Endocavity
Curved Array (200°)

E10-3HQ



3 - 10 MHz
Endocavity
Curved Array (200°)

P5-1Q



1 - 5 MHz
Phased Array

P7-3Q



3 - 7 MHz
Pediatric Phased Array

Being Productive
Being Trust

Acclarix™ LX25
Diagnostic Ultrasound System

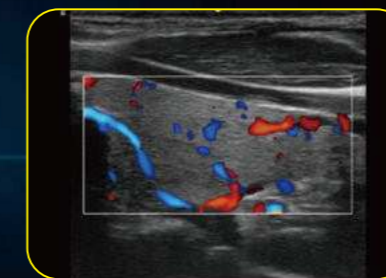




Stunning Clarity

Compacted with innovative Edan TAI technology and multiple imaging processing technologies, Acclarix LX25 could perfectly display ultrasound image in different modes, assisting sonographer to make more precise diagnosis.

- High fidelity, high-channel count architecture results in superb detail resolution, particularly at depth
- Tissue Adaptive Imaging (TAI) continuously and automatically optimizes imaging allowing more focus on the patient
 - In B-mode, TAI fine tunes multiple parameters to provide the best possible image quality
 - In Doppler, TAI automatically adjusts for flow state, providing improved continuity, border detection and filling of color



Thyroid



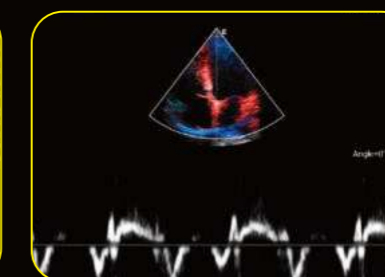
MSK



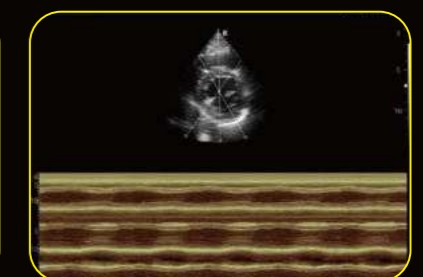
Fetal Heart



Color Doppler Spleen



TVD



Anatomic M

New Generation of Capability and Flexibility

Integrated with compact appearance, cutting-edge technology and intelligent workflow, Acclarix LX25 is to provide more valuable innovation. Its excellent image performance plays an important role in the prevention and early detection in primary medical care, enriching the diagnostic application and enhancing the clinical value.

The Virtue of Value

The Acclarix LX25 delivers unmatched value and performance across a broad range of applications:

- Abdomen
- Cardiac Screening
- Small Parts
- OB/GYN
- Vascular
- MSK
- Nerve
- Breast

Distinctive Design



Considerate gel warmer design for better experience



Customizable touch screen user panel to simplify diagnosis



3 active transducer ports to maximize clinical application