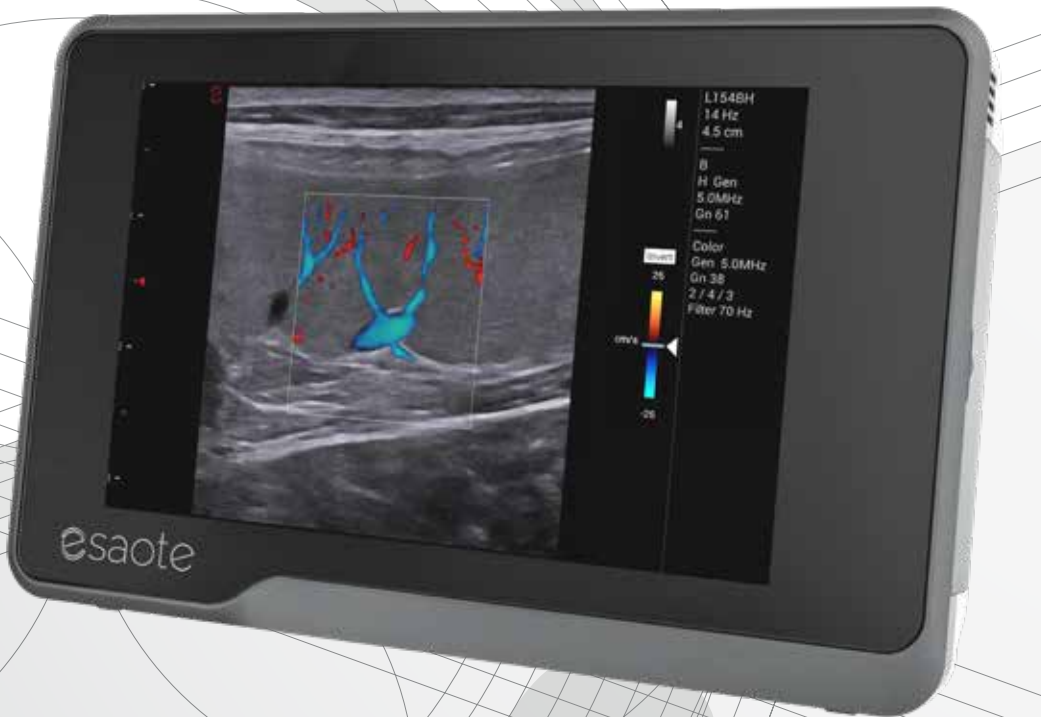


MyLab™ X1 Go VET

Enhance Care On The Go



esaote VET
HEALTH WITH CARE

MyLab™ X1 Go VET

Enhance Care On The Go

MyLab™ X1 Go VET has been designed to be your go-to device for a fast, reliable, and mobile veterinary diagnostics ally.

Offering unmatched mobility and convenience, you can quickly and easily perform ultrasound examinations wherever and whenever you need.



ULTRA-SLIM DESIGN

Easily fits in your bag for on-the-go diagnostics. Enhance mobility with its low weight (1,2 kg).



DURABLE AND EASY TO CLEAN

Robust construction and compatibility with a wide range of disinfection agents.



EXTENDED BATTERY LIFE

Fast boot-up time and over one hour of full performance scanning with the system operating on battery.



8" FULL HD MULTI-TOUCH SCREEN

Gesture-driven touchscreen to simplify operations and veterinary software to enhance productivity.



POWERFUL PERFORMANCE

High-quality imaging in a small device, with a complete probes package to cover all clinical needs.



3 YEARS WARRANTY

Essential protection to keep your investment running safely.

Go In Action

Featuring a comprehensive veterinary probe portfolio, it is an excellent choice for freelancers, ideal for POCUS, and adaptable for use with both small pets and large farm animals.



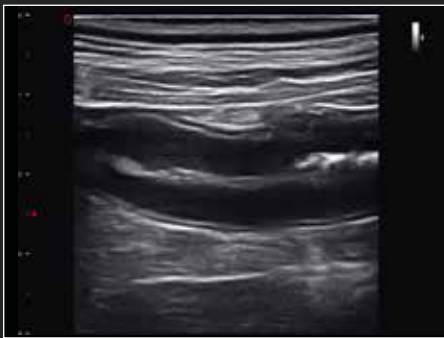
Feline, kidney



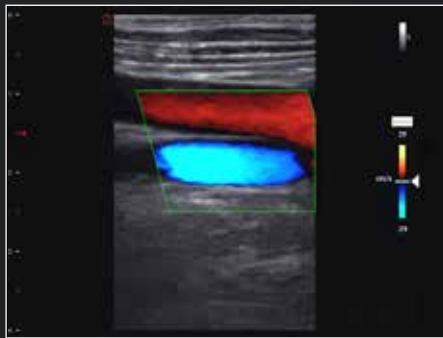
Canine, spleen



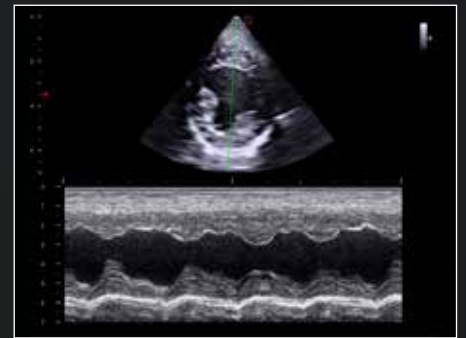
Canine, liver



Canine, intestine



Canine, aorta and cava vascularization



Canine, heart - M-Mode short axis



Bovine, follicle vascularization



Equine, tendon



Equine, spleen and kidney



esaote VET

160000538 Ver.01



Qisda Corporation No.157, Shan-Ying Road, Shan-Ting Li, Gueishan Dist., Taoyuan City, Taiwan

Imported and distributed by Esaote S.p.A. - sole-shareholder company

Via Enrico Melen 77, 16152 Genova, ITALY, Tel. +39 010 6547 1, Fax +39 010 6547 275,
info@esaote.com - www.esaote.com

MyLab™ is a trademark of Esaote s.p.a. Technology and features are device/configuration-dependent. Specifications subject to change without notice. Information might refer to products or modalities not yet approved in all countries. Product images are for illustrative purposes only. For further details, please contact your Esaote sales representative.

Please visit us online
for more information

