

SonoScape

*Where Precision Meets
Excellence in
Every Point-of-Care Moment*

E11

*Premium Portable
Ultrasound*



SonoScape

SonoScape Medical Corp.

2F, 12th Building, Shenzhen Software Park Phase II, Keji Middle 2nd Road,
Nanshan District, Shenzhen 518057, Guangdong, China
Tel: +86-755-26722890 Fax: +86-755-26722850
Email: market@sonoscape.net www.sonoscape.com

© 2024 SonoScape Medical Corp.
All rights are reserved.

SonoScape Medical reserves the right to change the
above information and discontinue any product at any
time without prior notification and will not be liable for any
consequences resulting from the use of this publication.

U-E11 2024.1108





SMART CONNECTION, STREAMLINED WORKFLOW

The E11 laptop ultrasound is equipped with a range of powerful efficiency tools designed to enhance daily workflows for healthcare professionals. By streamlining tasks and saving valuable time, it empowers doctors with a truly convenient and user-friendly ultrasound system. With the E11, experience advanced technology that supports faster, more accurate diagnostics – all at your fingertips.

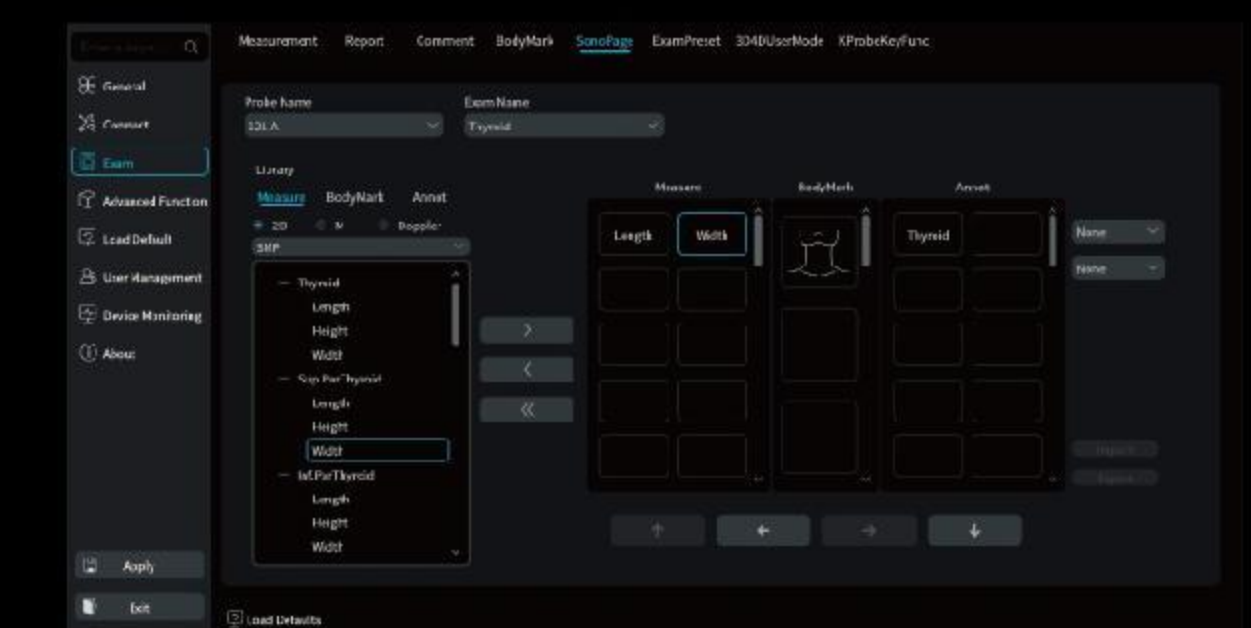


Auto Wakeup

Offers seamless convenience by automatically activating the probe and entering the default preset when the probe is lifted from its frozen state. Simply lift the probe and get right to work, saving time and ensuring a smoother, more efficient scanning experience.

SonoPage

Integrates measurements, bodymarks, and annotations into one page. Streamlined interface for focused diagnostics.



Introducing E11, SonoScape's first portable ultrasound powered by the advanced C-Field+™ platform. Designed specifically for POC applications, E11 combines crystal-clear imaging with dedicated POC functions, providing an exceptional user experience for physicians. With its seamless integration of portability and performance, E11 is set to redefine what's possible in point-of-care ultrasound.

SonoAssistant

Increases standardization and scanning efficiency. Supports user-defined protocols.



SonoHelp

Covers a variety of applications, serving as a useful reference for less-experienced clinicians.



EFFORTLESS MOBILITY, SLEEK DESIGN

CRAFTED FOR ULTIMATE SOF H I S T I C A T I O N

Multifunctional Rear Handle

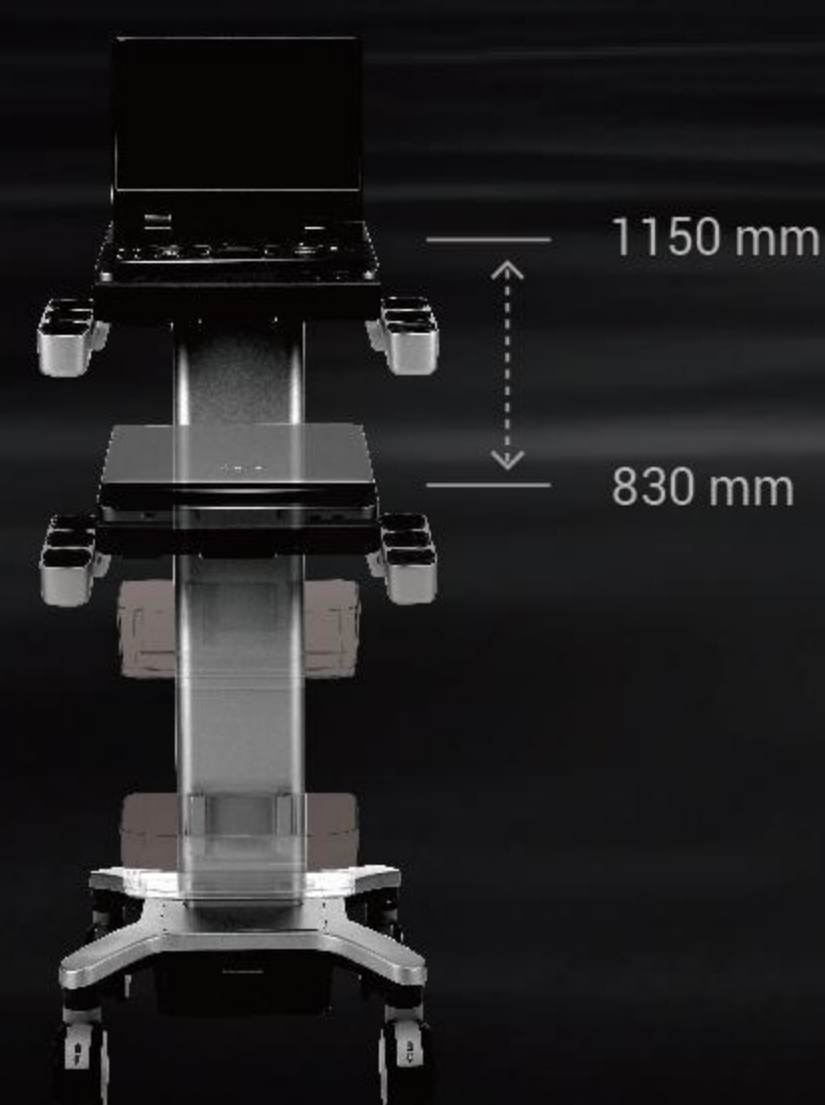
A durable bumper and cable management solution in one.

15.6-inch LCD Monitor with 12.3-inch LCD Touchscreen

Experience precision and clarity with the most cutting-edge screens.

Expansive Lifting Range

Achieve the perfect height, adjusting from 830 mm to 1150 mm for optimal accessibility and comfort!



Ultra-slim Casters

Smooth movement in confined spaces.



Sleek Power Redefined

Discover the perfect blend of performance and portability with E11, weighing only 5.4kg and just 49mm thick—where cutting-edge technology meets unparalleled portability.



Unmatched Power for Every Procedure

Experience unparalleled efficiency with E11's 8-hour total battery life featuring E-Pack, empowering doctors to focus on what matters the most.



Convenient Probe Extender

Support 1 to 4 probe extender and unlock endless possibilities in ultrasound imaging!



Effortless Charging, Lasting Durability

Our magnetic charging port makes powering up a breeze while safeguarding your cables from wear and tear over time.



Elevate Your Ultrasound Experience

Experience the Future with its all-seamless control panel, perfectly designed for POC applications.

