

MyLab™ HERON

Fly into Action



MyLab™ **HERON**

Fly into Action

Precision, adaptability, and efficiency are the heron's skills mirrored in the design and performance of the MyLab™Heron portable ultrasound system.

Just as the heron excels in diverse environments with grace and accuracy, the system delivers clear imaging, seamless operation, and reliable performance, making it versatile for any clinical need while ensuring confidence in every diagnosis.

It meets your needs for quick ultrasound access, overcomes space constraints with a full connectivity package, and ensures flexibility while maintaining a high level of quality.

The comprehensive MyLab™Heron system offers a wide range of reliable clinical features to ensure timely diagnosis and boost your confidence in your everyday work.

The convenient, intuitive, and easy-to-clean touch interface makes it suitable for any setting, ensuring exceptional usability in every environment.



**ULTIMATE
DESIGN**



**QUICK
REACTION TIME**



**HIGH STANDARD
OF IMAGE QUALITY**



**INNOVATIVE AND
FAST WORKFLOW**



**DESIGNED FOR
VETERINARIANS**





**HIGH RESOLUTION 15.6”
MAIN SCREEN**

Large adjustable/flexible monitor with superior detail enhancement and full-screen mode.



**ULTRAWIDE 15”
TOUCHSCREEN**

Wide touchscreen with digital TGC for uncompromising easy of use.



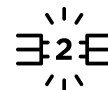
**EXCLUSIVE EASY-TO-
CLEAN TOUCH PANEL**

Cleanable panel built to last over time with sensitive touchpad to maximize your device control.



**LIGHT & COMPACT DESIGN
WITH BATTERY SUPPORT***

Fast boot-up time and over one hour of full performance scanning with the system operating on battery.



2 ACTIVE CONNECTORS*

2 onboard transducer connectors for immediate probe switching, up to 4 with the cart configuration*.



3 YEAR WARRANTY

Essential protection to keep your investment running safely.



*Optional

Unmatched Vision

Heron has exceptional eyesight, enabling them to detect subtle movements even in challenging conditions, making them highly effective hunters.

Similarly, MyLab™Heron offers incredibly detailed and high-resolution imaging, in superficial areas as well as in deeper ones, thanks to the wide range of probes.

All this makes it possible to scan from the smallest to the biggest animals in all applications covering general imaging, cardiology, musculoskeletal, reproduction, and ensuring unmatched clarity in all your examinations.



Canine, kidney - vascularization assessment with microV



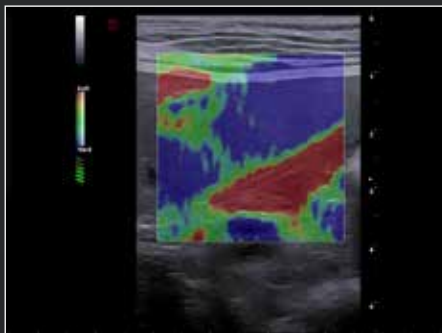
Canine, gallbladder with organizations



Canine, pylorus



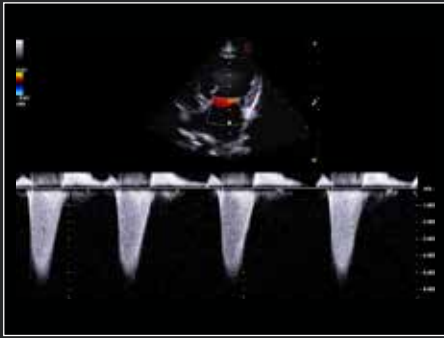
Feline, intestine



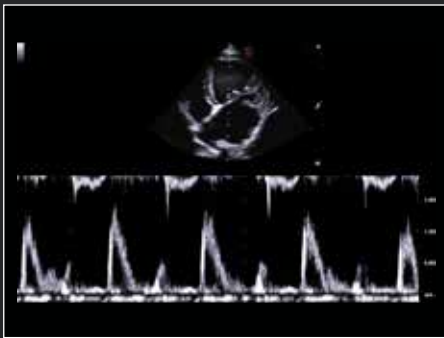
Canine, spleen - stiffness assessment with ElaXto



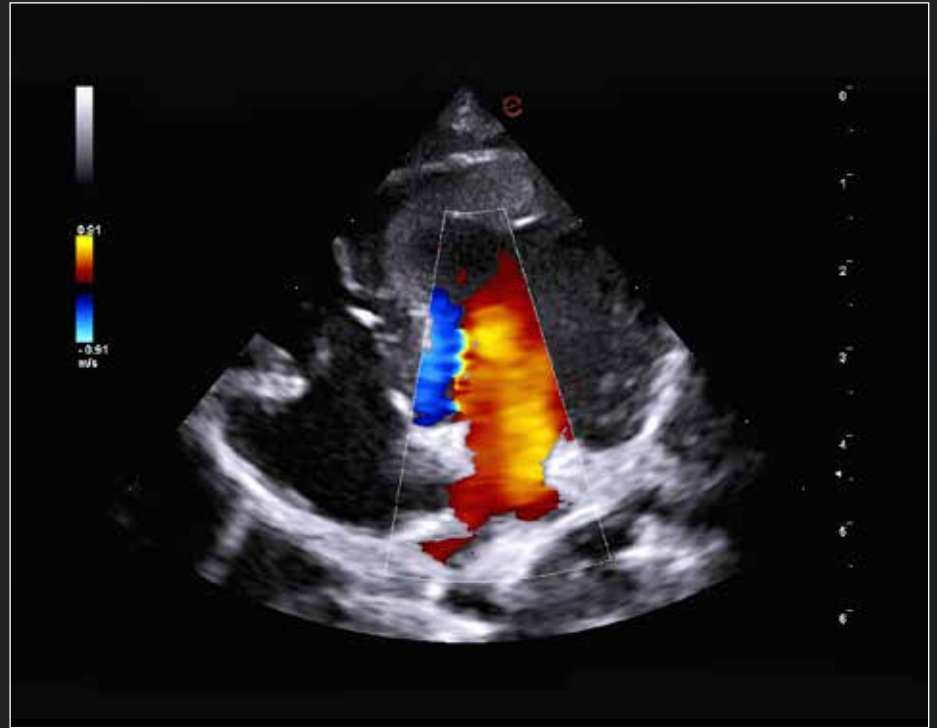
Canine, urinary bladder - neoplasia vascularization



Canine, heart - mitral flow CW



Canine, heart - mitral flow PW



Canine, heart - mitral flow



Exotic, frog, heart



Exotic, turtle, heart



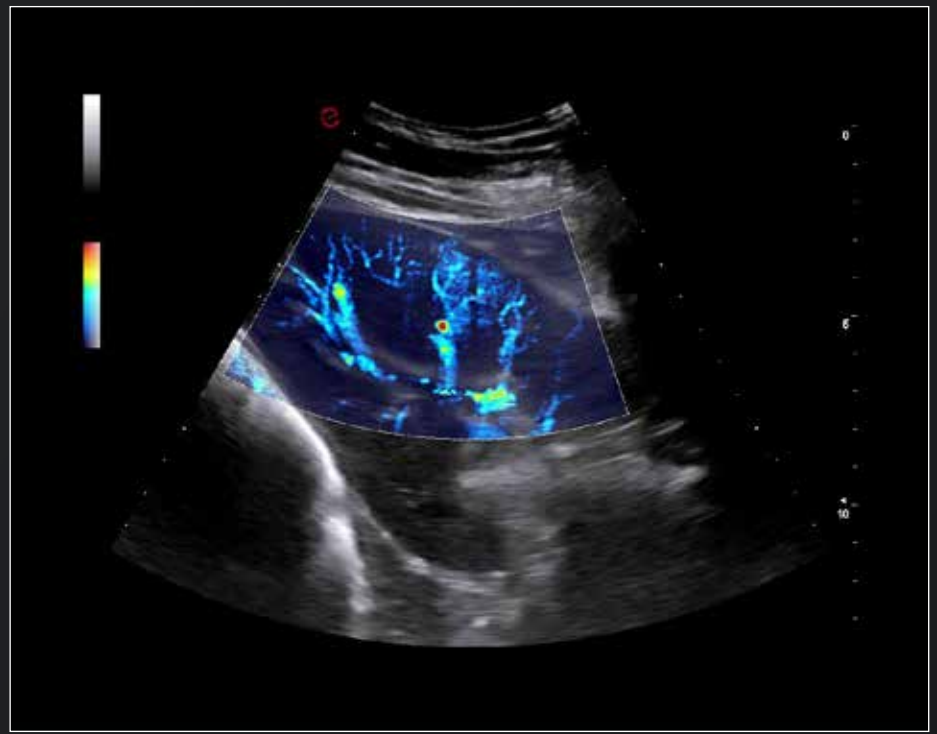
Exotic, ferret, liver



Equine, tendon - transversal view

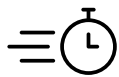


Equine, heart - long axis view



Equine, kidney - microvascularization with microv

Efficiency Reinvented with Intuitive Design



FAST START

Rapid initiation of operational scanning with fast boot-up and direct access to probe and preset selections.



CUSTOMIZABLE INTERFACE

Modular and customizable interfaces, including annotations, measurements, and shortcuts, help you redesign the zones for an improved experience.



AUTOMATIC OPTIMIZATION

Adaptive B-Mode and color tools, such as eScan and eDoppler, provide clearer images in any condition, even in challenging examinations.



EASY REPORTING AND FOLLOW-UP

Integrated reporting capabilities support quick comparison of multiple exams – even acquired using different modalities.



A.I. POWERED WORKFLOW

A.I. based tools*, powered by Augmented Insight™, become your copilot, making your daily routine more efficient and enhancing your user experience with the device.



MYLIBRARY

Embedded veterinary libraries provide direct access to imaging guidance, combined with live preview and anatomical references.



EASY CONTROL & EASY TUNING

Seamless touch gesture interaction via a wide touchscreen and fine tuning of more than 40 parameters with only 3 sliders, thanks to easyMode and easyColor.



FLEXIBLE AND REMOTE REPORT

Customizable measurements and annotations automatically added to the reports, even remotely from your laptop with MyLab™Desk VET.

Built Tough for Every Journey

MyLab™Heron, with its portable laptop-style design, is carefully crafted to fit in the tightest spaces of any kind of setting.

You can move it effortlessly from one room to another using its slim and smart cart or can carry it anywhere it is needed, thanks to its retractable functional handle.

When traveling with your MyLab™Heron, you can opt for a convenient travel case or a comfortable backpack to ensure safe transport, making it ideal for multi-site use.

CUSTOMIZE YOUR PROTECTION

To protect your MyLab™Heron during transportation and to guard it against potential shocks, we have crafted an exclusive customizable silicone bumper. For enhanced protection in more demanding environments, you can also choose a purpose-built rugged case.





esaote VET

160000535 Ver.01



Esaote S.p.A. - sole-shareholder company

Via Enrico Melen 77, 16152 Genova, ITALY, Tel. +39 010 6547 1, Fax +39 010 6547 275,
info@esaote.com - www.esaote.com

MyLab™ is a trademark of Esaote s.p.a. Technology and features are device/configuration-dependent. Specifications subject to change without notice. Information might refer to products or modalities not yet approved in all countries. Product images are for illustrative purposes only. For further details, please contact your Esaote sales representative.

Please visit us online
for more information



 Italian design 