



MAI

Anything, Anytime, Anywhere
Live Service for Imaging

SIUI

HEADQUARTERS:

Shantou Institute of Ultrasonic Instruments Co., Ltd.
Add: No.77, Jinsha Road, Shantou 515041 Guangdong, China
Tel: 86-754-8825 0150 <http://www.siui.com> E-mail: siui@siui.com

HONG KONG OFFICE:

Shantou Institute of Ultrasonic Instruments (HK) Co., Ltd.
Add: Room 2101, Tung Chiu Commercial Center 193 Lockhart Road, HK
Tel: 852-2891 6722 Fax: 852-2891 6723



SIUI



SIUI Healthcare



SIUI Healthcare



SIUI Healthcare

All rights reserved to SIUI 2023
Apogee 6300 EN23230518



Apogee 6300

Digital Color Doppler Ultrasound
Imaging System

SIUI



Equipped with advanced imaging platform and all-round application solutions, **Apogee 6300 is capable in delivering outstanding image with high clinical value.** Ergonomic design and seamless workflow also support high diagnosis productivity with less workload.

User-friendly Design Relieves Your Daily Operation



23" high resolution medical monitor



13.3" tilting touch screen



5 probe ports



Rotatable and height adjustable control panel

Realview⁺

A High-level Ultrasound Imaging Platform



Realview⁺

Applied with innovated algorithm, **Realview⁺** embodies enhanced scanning efficiency and user-oriented commitment. Advanced imaging technology is employed to present significantly updated image quality at a faster response speed. Streamlined workflow improves manipulation comfort. The platform empowers next-level imaging experience and solutions to satisfy diagnostic demands.



Intelligent



Accurate



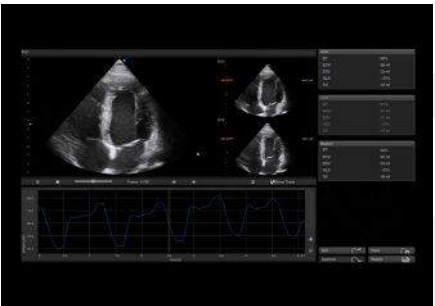
Efficient



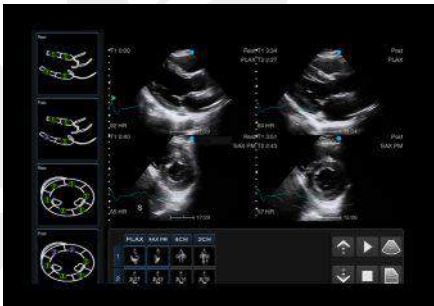


Functionality for OB/GYN

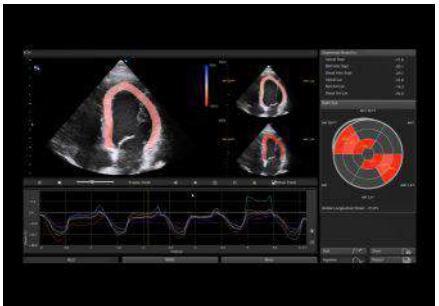
Equipped with automatic measurement packages and professional 4D tools, Apogee 6300 facilitates quick calculation and accurate diagnosis on fetal examination. While Salpingography allows visualization of the fallopian tubes patency, which supports the treatment of fallopian tube blockage and infertility.



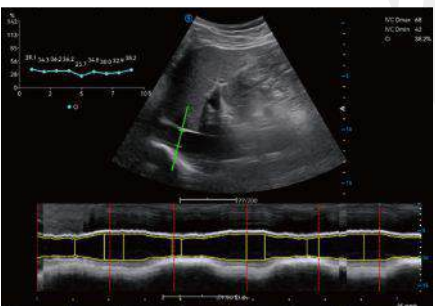
Auto EF



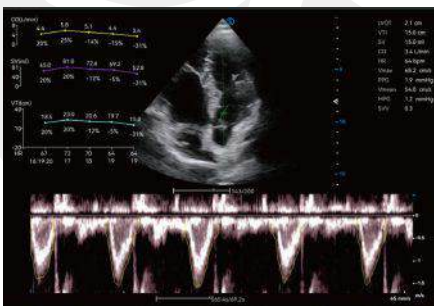
Stress Echo



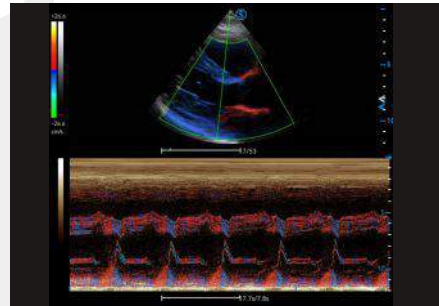
Auto SG



Auto IVC



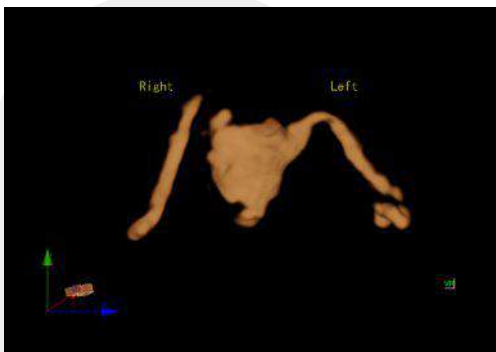
Auto VTI



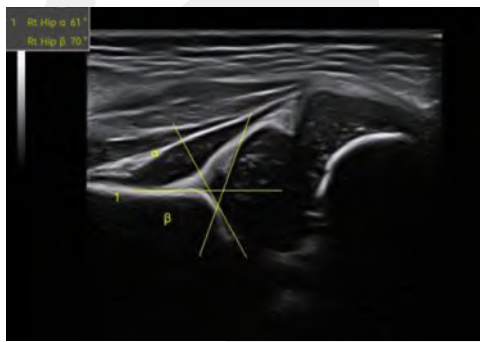
TVM



Lumi 4D



Salpingography



Auto hipjoint



Auto OB

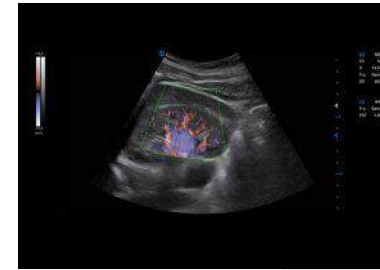


Functionality for Cardiology

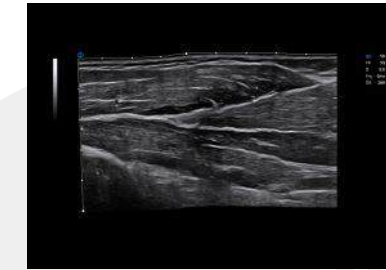
Apogee 6300's superior clinical image quality and full cardiac measurement packages provide complete heart disease assessment. With single crystal phased array probe, it delivers higher frame rates and Doppler sensitivity to effectively and accurately assess cardiac performance.

Functionality for Radiology

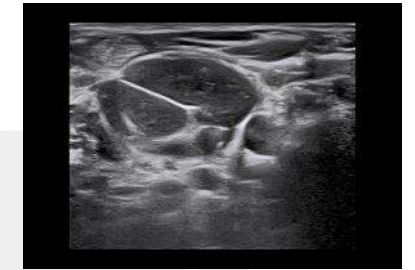
Apogee 6300 has great advantages in imaging. Its higher sensitivity and better contrast provide optimal blood flow information and clear visualization of tissue structure. Excellent image quality proves its versatility in a full range of applications.



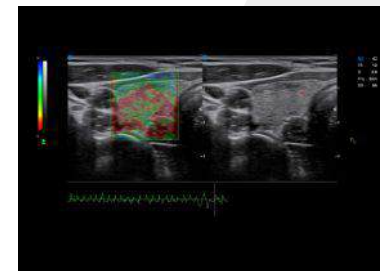
VS Flow



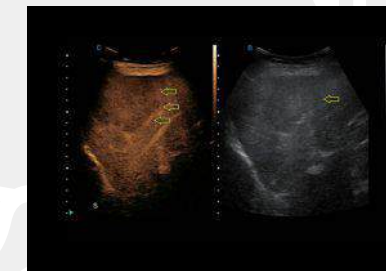
Panoscope B Mode



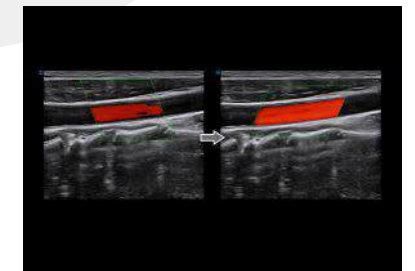
Needle Enhancement



Strain Elastography



Contrast Harmonic Imaging



Auto Fit

Strain Elastography provides a simple and qualitative measurement of lesion stiffness relative to the surrounding tissues, so as to effectively distinguish between benign and malignant solid tumors.

Needle Enhancement enhances the visibility of the needle to conduct more efficient biopsy puncture.

VS-Flow upgrades the sensitivity and resolution to better display low velocity blood flow such as in kidney and thyroid nodules.

Featured Probes Meet Challenging Diagnosis

Single crystal phased array probe

Applications: adult cardiology, pediatric cardiology and brain etc.



Cruciform pencil probe

Applications: Cardiology (esp. aortic stenosis)



Straight-handled pencil probe

Applications: TCD, limb blood flow



Hockey stick probe

Applications: MSK, peripheral vascular, small organs and micro vessel intraoperative imaging and puncture guidance

