



MIAI

Anything, Anytime, Anywhere
Live Service for Imaging

SIUI

HEADQUARTERS:

Shantou Institute of Ultrasonic Instruments Co., Ltd.
Add: No.77, Jinsha Road, Shantou 515041 Guangdong, China
Tel: 86-754-8825 0150 Fax: 86-754-8825 1499
<http://www.siui.com> E-mail: siui@siui.com

HONG KONG OFFICE:

Shantou Institute of Ultrasonic Instruments (HK) Co., Ltd.
Add: Rm 2303, Tung Chiu Commercial Centre, 193 Lockhart Road, Wanchai, HK
Tel: 852-2891 6722 Fax: 852-2891 6723



SIUI



SIUI Healthcare



SIUI Healthcare



SIUI Healthcare

All rights reserved to SIUI 2023
Apogee 5500pro EN10231110

SIUI

Apogee 5500 Pro



Professional, Progressive, Productive

Digital Color Doppler Ultrasound Imaging System



Apogee 5500 Pro has been developed to meet the surging clinical demand for a comprehensive ultrasound solution. Equipped with Realview+ platform, Apogee 5500 Pro is capable of delivering high-quality images with improved frame rate and resolution. The intelligent and dedicated solutions for various medical branches, such as cardiology and advanced radiology, significantly enhance clinicians' diagnostic confidence.

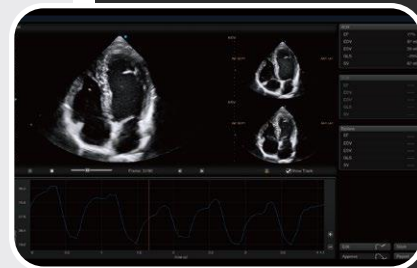
- ① Gel warmer
- ② Rotatable control panel
- ③ Adjustable height
- ④ 5 probe connectors



Insightful Cardiology Application Solutions Facilitate Comprehensive Diagnosis

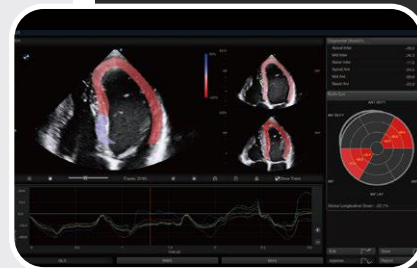
Automatic and accurate

Auto EF enables automatic identification and tracking of endocardium during the cardiac cycle, thereby facilitating the calculation of EDV, ESV, LVEF and other necessary results within seconds.



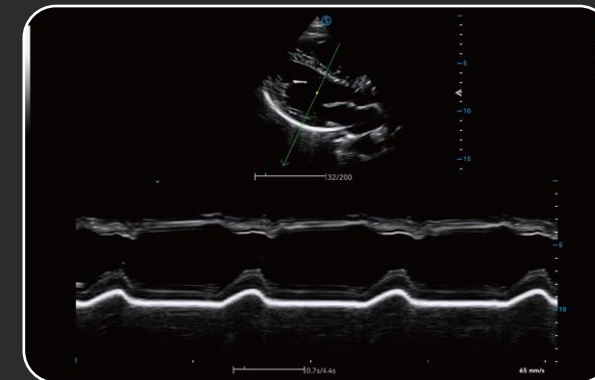
Efficient and quantitative

Auto SG allows global and segmental analysis of left ventricular myocardial motion through the scores displayed in a bull's-eye plot.

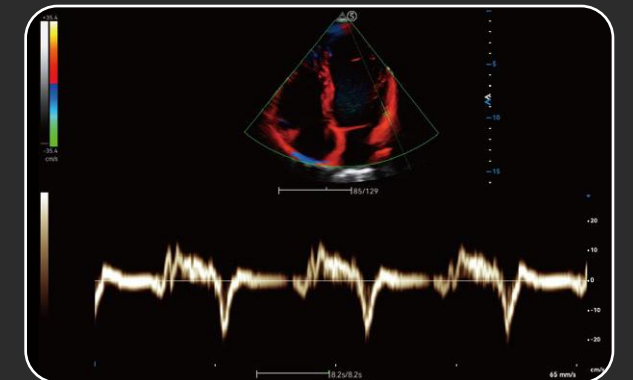


Objective and intelligent

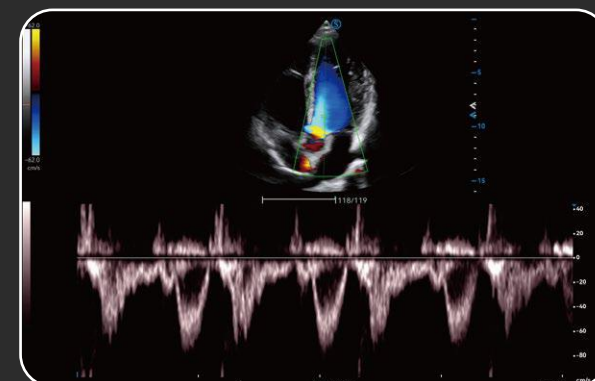
Stress Echo assists in detecting coronary artery abnormalities by comparing myocardial wall motion of the heart at rest and under stress.



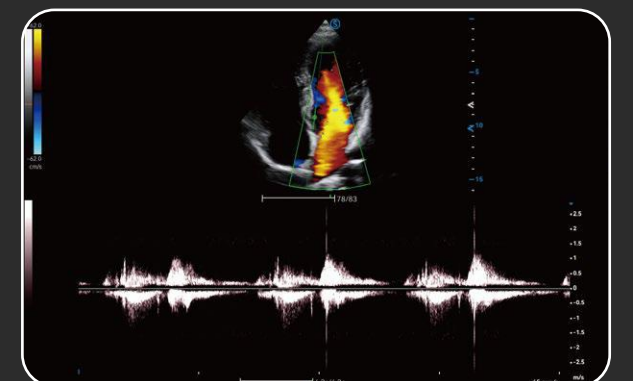
Anatomic M Mode



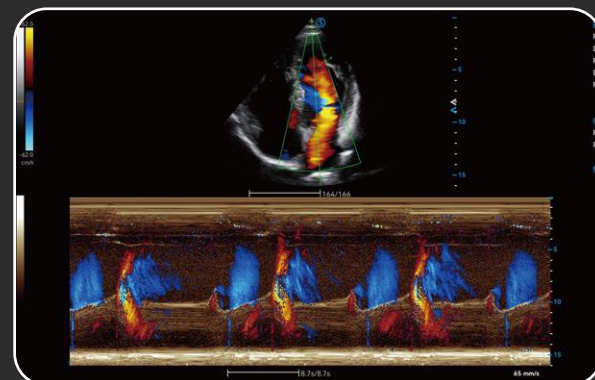
Tissue Doppler Imaging



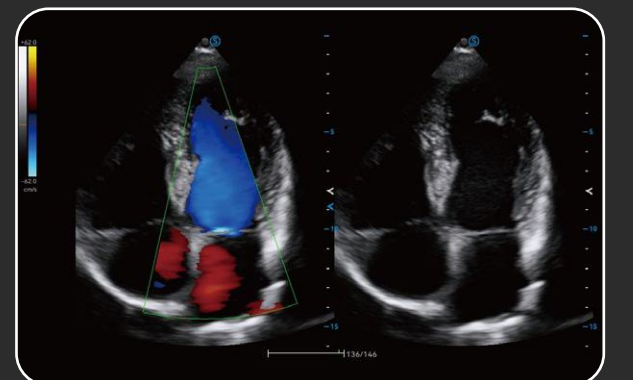
PW Mode



CW Mode



Color M Mode

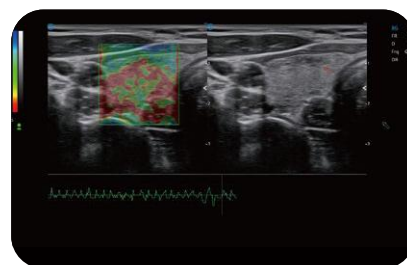


Dual Mode – CFM & B Mode

All-Round Radiology Application Solutions

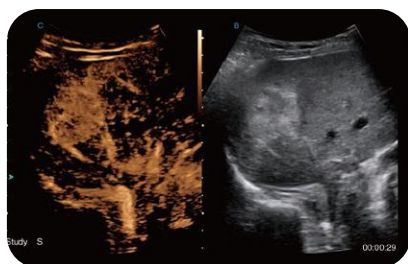
Intuitive display, effective diagnosis

Strain Elastography visualizes the tissue stiffness to detect potential abnormalities within tissue.

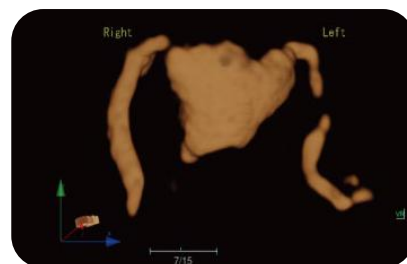


Enhanced contrast, improved accuracy

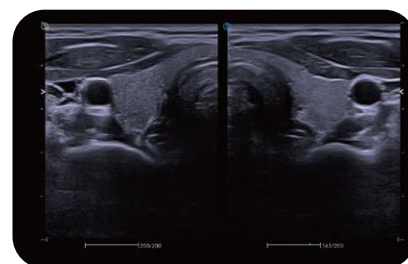
Contrast Harmonic Imaging visualizes the blood flow perfusion status with contrast agent. The timer function further improves the objectivity of tumor diagnosis.



While in gynecology, **Salpingography** enables effective evaluation of tubal morphology and patency for female infertility and pelvic pathology diagnosis.



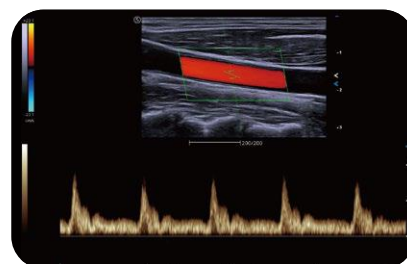
Superior clarity, excellent sensitivity



Thyroid – Dual Mode



Kidney – VS Flow



Carotid artery – PW

Smooth Workflow from the Beginning to the End

► Before Scanning

Drag and set **customized exam type layout**

One click to set self-defined parameters via **Q-Preset**

Acquire informative scanning tutorial from **S-Helper**

► During Scanning

Locate measurement spot precisely with **Zoom Cursor**

Simplify calculation process with **reverse import of specialized results**

► After Scanning

Compare multiple images via **S-view**

Safeguard the data with reliable **data protection mechanism**

