

CHISON

Value Beyond Imaging



ECO1 VET

Premium Design, Surprising Price



WWW.CHISON.COM



Ultra - Light



12 inch rotatable LED monitor (0~30°)
adapt to different view angles



Vehicle Power Charger

ECO1 VET

Abdomen, Reproduction, Tendon etc.



One- key quick save

DICOM 3.0 (optional), USB



Anti-water keyboard cover (optional)



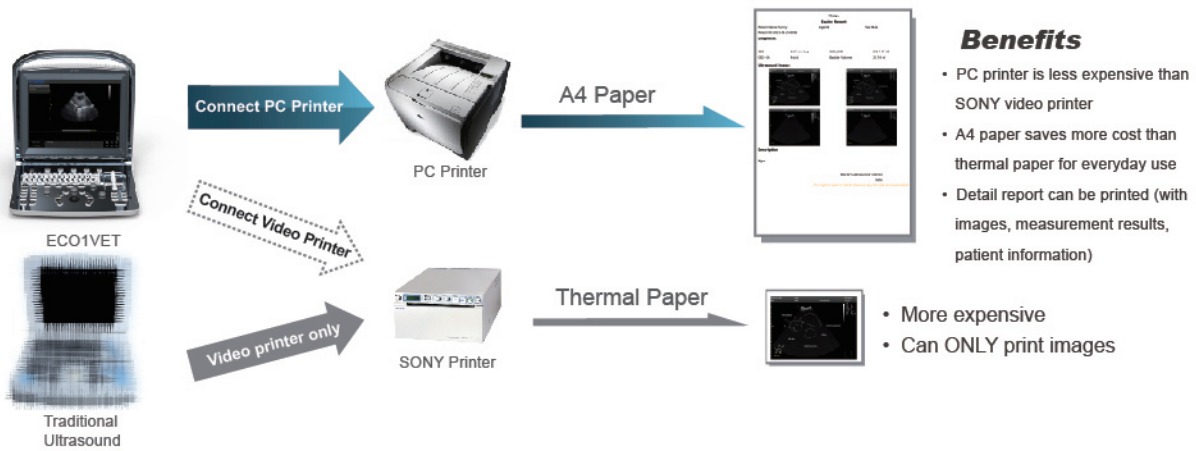
One key to **Full Screen**



Carry bag (BG-100) (optional)

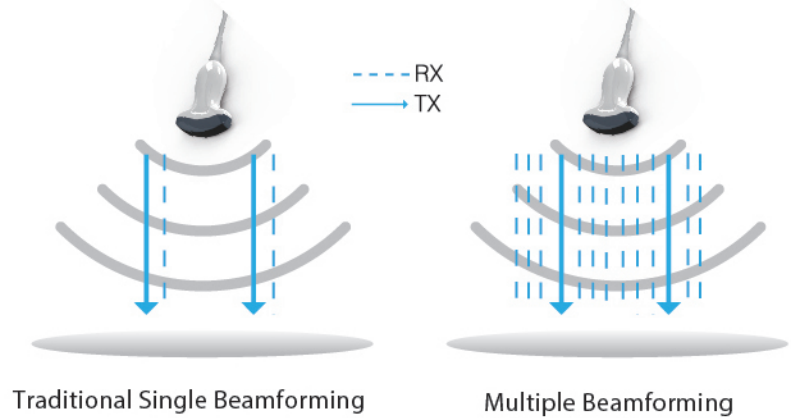


Support PC Printer

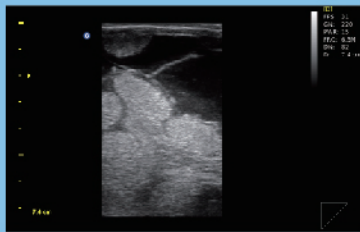


Multiple Beamforming Technology

- Enhance Frame Rate
- Improve Image Resolution



Excellent Image



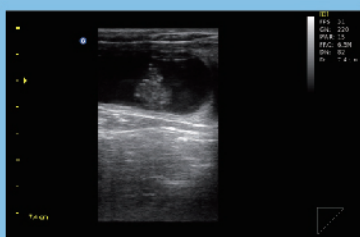
Late Pregnancy of Bovine



Canine Kidney



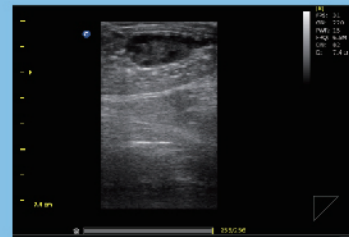
Bovine Pregnancy



Early Pregnancy of Bovine



Bovine Follicle



Bovine Ovary

Specifications

Applications	Large animal: Reproduction, Tendon.
	Small animal: Abdomen, Small parts, Basic cardiology.
Display Modes	B, B/B, 4B, M, B/M
Gray Scale	256 Levels
Scanning Depth	240mm Max (depend on the probe types)
Probe Frequency	2.5MHz - 11MHz (Depend on the probe types)
No.of Probe Connectors	One connector (Standard)
Cine Loop	256 frames
Zoom	4 steps
Software Packages	Canine: GS, CRL, HD, BD
	Feline: HD, BD
	Equine: GS
	Bovine: BPD, CRL, Trunk Diameter
	Ovine: BPD, CRL, Trunk Diameter
General Measurements	B mode: distance, circumference, area, volume, ratio, angle, % stenosis, histogram, profile etc.
	M mode: distance, time, velocity, heart rate etc.
Archives Management	Patient information management, Patient images record, Patient exam report.
Documentation	Full screen documentation, Hospital name, Patient name, Date/time
	Annotation database available, Pre-saved phrases can be recalled
Power Supply	AC 240V-100V, 50Hz- 60Hz
Standard Configuration	Main unit + L7M-A Linear (5.3MHz-10.0MHz) probe + 1probe connector+ 3 USB ports +VGA port + Video port + LAN port, Compund, SRA, I-Image, 8G Memory Card
Optional	2 probe connectors , Built-in Battery , DICOM 3.0, Anti-water keyboard cover, Carry Case (BG-100) , Support PC Printer* (HP P2055D, HP 1102, HP M251n) TR-9000 , TH



5.0MHz - 10.0MHz Linear Rectal
L7V-A



4.5-8.0 MHz Micro-Convex
MC6-A



5.3MHz-10.0MHz Linear
L7M-A



5.3MHz-11.0MHz Linear
L7S-A



2.5MHz-5.0MHz Micro-Convex
MC3-A



4.0-7.0 MHz Micro-Convex
MC5V-A



2.5-5.0 MHz Convex
C3-A

CHISON MEDICAL IMAGING CO., LTD.

Factory Address:

NO.8, Xiang Nan Road, Shuo Fang, New District, Wuxi, Jiang Su Province, CHINA 214142

Sales & Service Contact Address:

No. 9 Xin Hui Huan Road, New District, Wuxi, Jiang Su Province, China 214028

TEL: 0086-510-85310593 / 85310937 FAX: 0086-510-85310726 EMAIL: export@chison.com.cn



We reserve the right to make changes to this catalogue without prior notice. Please contact us or your local dealer for the latest information.

*Please refer to the user manual for details.

E-ECO1VET-15080;