

# SonoScape

## X3

「 SMALL SIZE,  
SMART SIGHT 」

### Company Milestone

2002: Company Founded in Shenzhen, China

2008: Received "European Entrepreneurial Company 2008" award from FROST & SULLIVAN

2009: Received "Product Quality Leadership Award 2009" from FROST & SULLIVAN

2011: Received the Reddot 2011 Product Design Award for S20 in Essen, Germany

2013: Received "Ultrasound Market Growth Leadership Award, 2013" from FROST & SULLIVAN

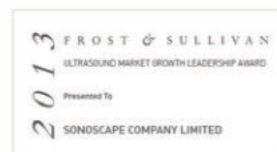
2014: Received the iF product design award 2014 for S9 in Munich, Germany

2014: Received "Company of the Year in Ultrasound Market, 2014" from FROST & SULLIVAN

2016: Received "Product innovation in Electronic Endoscopy Market" from FROST & SULLIVAN

2017: Received the iF product design award 2017 for X5 in Munich, Germany

2017: Listed on the Shenzhen Stock Exchange in April



ISO 13485

CE 0197

# SonoScape

SonoScape Medical Corp.

2F, 12<sup>th</sup> Building, Shenzhen Software Park Phase II, Keji Middle 2<sup>nd</sup> Road, Nanshan District, Shenzhen 518057, Guangdong, China  
Tel: +86-755-26722890 Fax: +86-755-26722850  
Email: market@sonoscape.net www.sonoscape.com

U-X320190628









Revolutionizing ultrasound scanning, the handcarried color Doppler system X3 is equipped with advanced technology to present you with excellent image quality. Taking into account the various situations you may find yourself in, the X3 is extremely light weight and small with a laptop design providing you with an experience of extreme mobility and flexibility during any situation. X3, offers a wide range of transducers to fit your every need for clinical applications, and its professional exam modes will bring renewed confidence in your examinations.

## Advanced Technology

The new platform provides users a more efficient scanning process, due to its advanced technology. The X3's image quality gives users a clear view of lesions, which enable users to improve diagnosis accuracy and save scanning time.

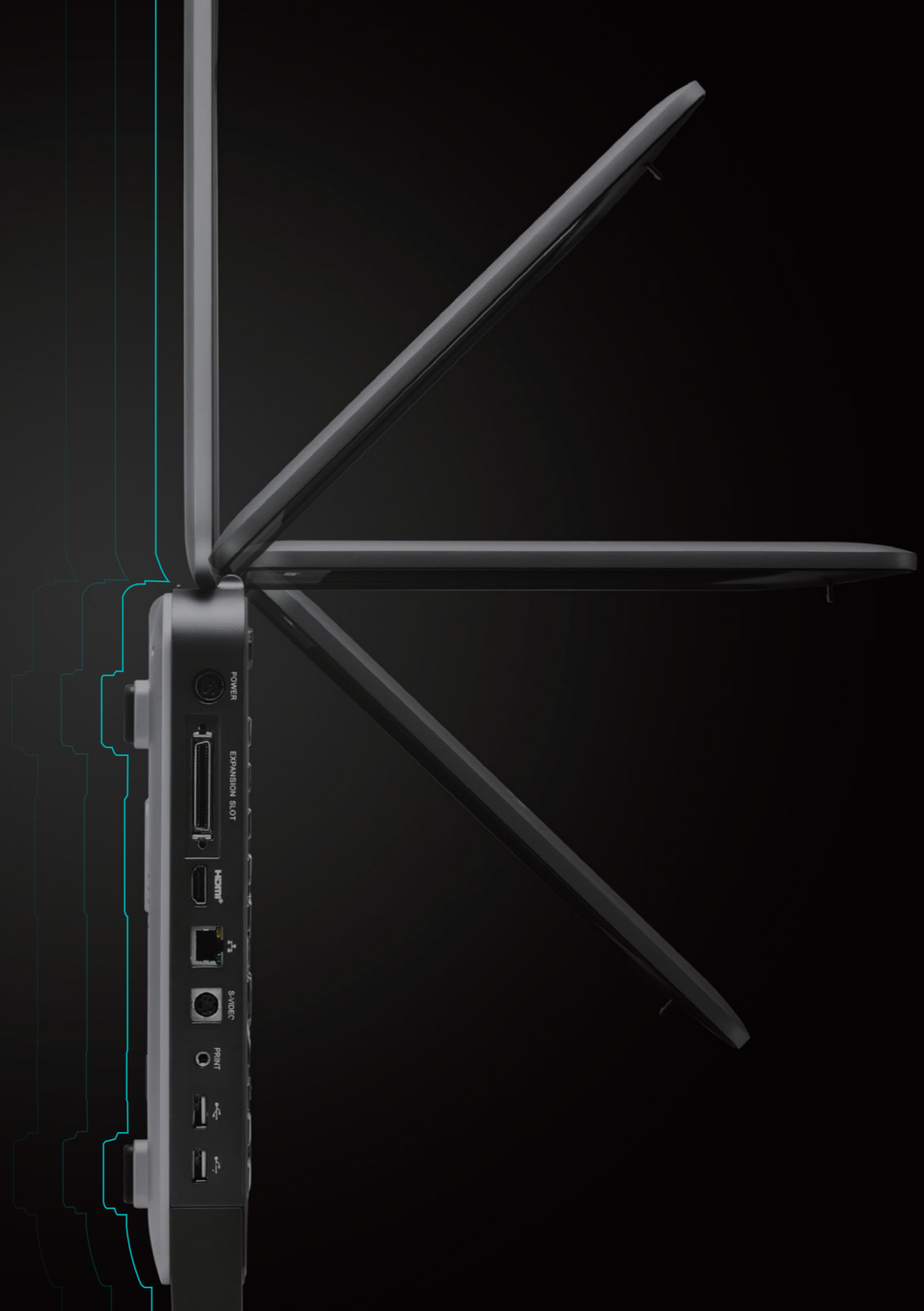
-  Multi-beam processing technology
-  Spatial compound imaging
-   $\mu$ -Scan image processing technology
-  Pure inversion harmonic imaging

## Ultimate Flexibility

- Laptop size and light weight
- Magnalium-alloy body with 15.6 inch monitor
- 180 degree folding angle
- Anti-reflective screen and auto brightness adjustment
- Integrated trolley with height adjustment
- Noiseless system
- Quick boot up

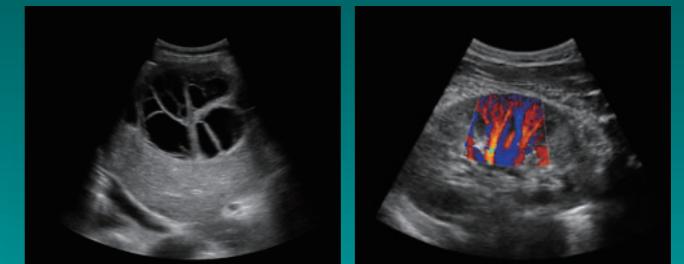
## Various Accessories

- Comfortable backpack and travelling case
- Extended connector for up to 3 probes
- Wifi and Bluetooth wireless connection
- HDMI



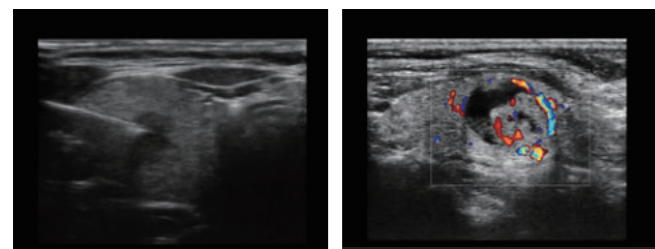


## Comprehensive Applications



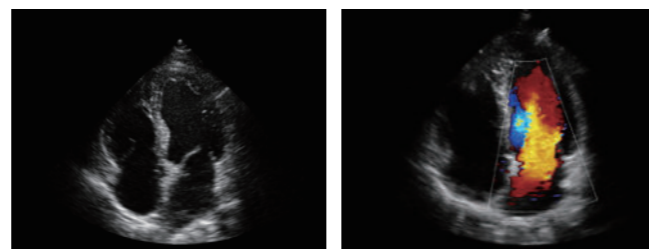
**Convex Probe 3C-A**

Ideal for an abundant amount of applications such as abdomen, gynecology, obstetrics, urology and abdomen biopsy.



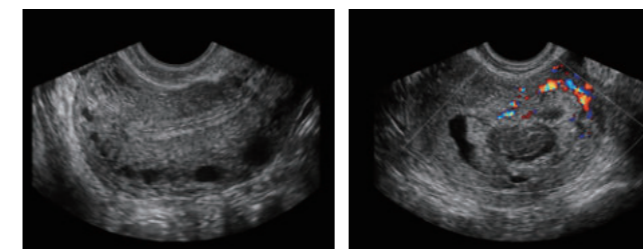
**Linear Probe L741**

This linear probe is designed to satisfy vascular, breast, thyroid and other small parts diagnosis, and its adjustable parameters could also present users a clear view of MSK and deep vessels.



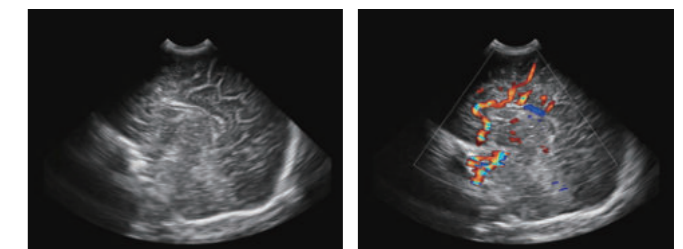
**Phased Array Probe 3P-A**

For the purpose of adult and pediatric cardiology and emergency, the phase array probe provides elaborate presets for different exam modes, even for difficult patients.



**Intracavitary Probe 6V1**

Intracavitary probe could face the applications of gynecology, urology, prostate, its temperature detect technology not only protects the patient but also extends service life.



**Micro-convex Probe C613**

The C613 is a multi-application probe, especially in abdominal scanning for pediatrics and new born babies. The gentle convex shape provides patients a comfortable experience enabling users to get sections easier.

