

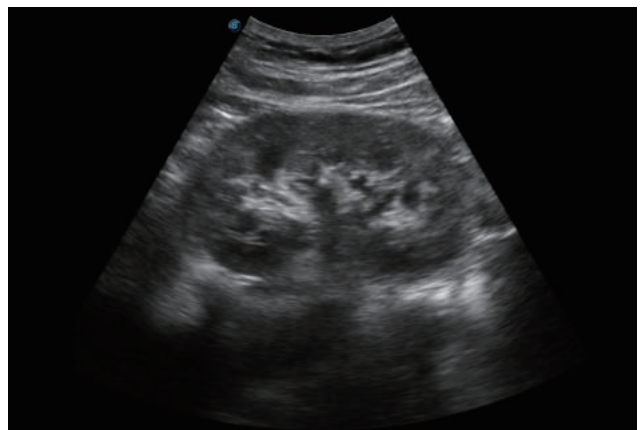
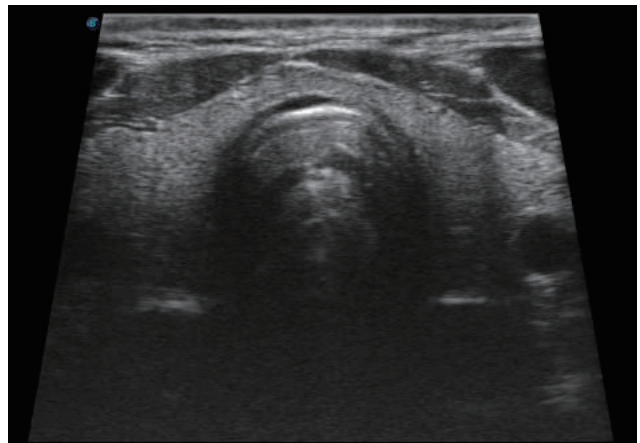
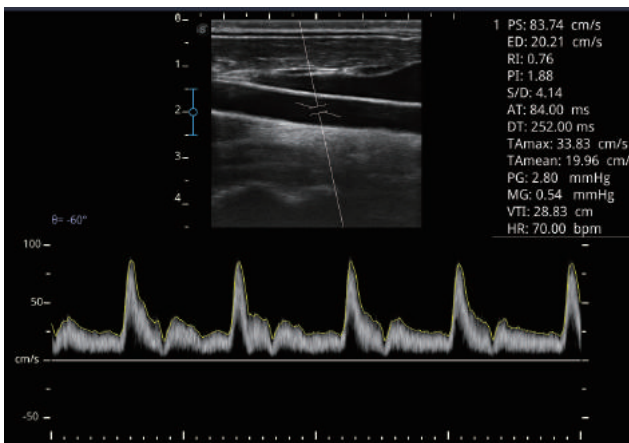
SonoScape

Caring for Life through Innovation

E₁



E1, as a new hand carried BW ultrasound model, is equipped with complete functions which enhances its competitiveness to entry level ultrasound models. It not only provides satisfying image quality but also brings users a smooth workflow experience.



■ Efficient Diagnosis

- μ-Scan - Speckle Reduction & Edge Enhancement
- Spatial Compound Imaging
- PIH - Pure Inversion Harmonic
- Wide Scan - Enlarge Image Area
- PW Doppler
- Chroma - Highlight Image Details
- B Steer for Linear Probe

■ Ease of Use

- Quick Boot Up
- Auto Brightness Adjustment
- Auto Image Optimized
- Auto IMT
- Auto Trace

■ Ergonomic Design

- 3 Transducer Ports
- Light Weight and Compact
- 15.6 inch Anti-flickering HD LED Screen
- Tilting Monitor Angle Adjustment
- Backlit Keyboard and Intelligent Panel
- Long-lasting Battery for 90 mins

■ Expansive Accessories

- Wi-Fi and Bluetooth Available
- DICOM 3.0
- 500GB Hard Disk
- Height Adjustable Trolley
- Durable, Carry-on Site Suitcase

SonoScape

Yizhe Building, Yuquan Road, Shenzhen, 518051, China

Tel: 86-755-26722890

Fax: 86-755-26722850

E-mail: sonoscape@sonoscape.net

www.sonoscape.net



ISO 13485

CE 0197